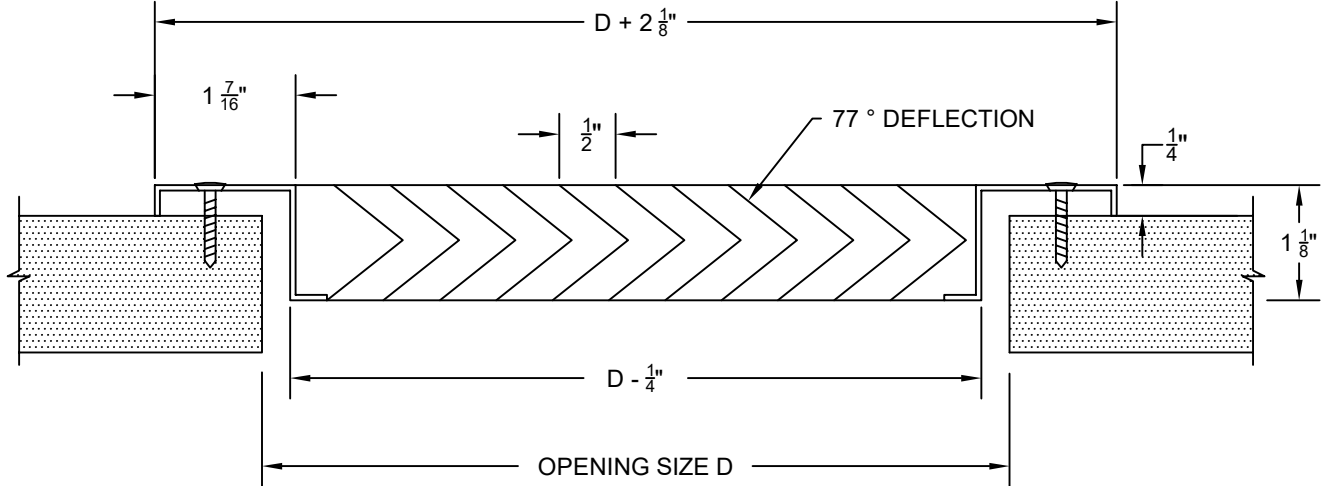
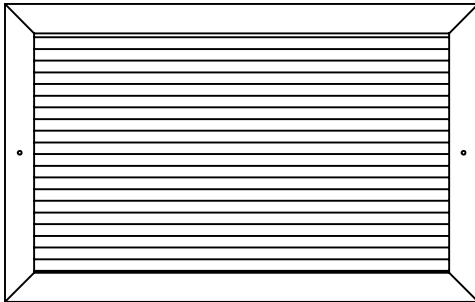
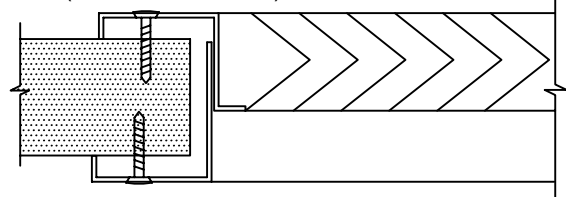
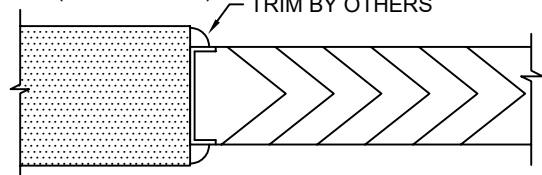


DOOR/TRANSFER GRILLE
 • STEEL • SIGHT PROOF

 B70 - SF (SINGLE FLANGE)


LISTED SIZES ARE OPENING SIZE (DOOR CUT-OUT)
 WIDTHS 18" TO 30" IN 1" INCREMENTS
 HEIGHTS 4" TO 30" IN 1" INCREMENTS


 B70 - DF (DOUBLE FLANGE)

 B70 - C (CORE ONLY)

FEATURES

- FOR USE IN DOORS OR PARTITIONS FOR SMOOTH TRANSITION OF AIR. CAN ALSO BE USED AS A RETURN GRILLE WHEN INTERIOR MUST BE VISUALLY CONCEALED.
- HEAVY DUTY 20 GAUGE STEEL TO RESIST BUMPS AND KICKS.
- LARGEST FREE AREA POSSIBLE WITH SIGHT PROOF CORE.
- STANDARD FINISH IS POWDER COAT WHITE. BLACK AND SILVER ARE ALSO AVAILABLE.
- SCREW HOLES ARE STANDARD.

OPTIONS (SPECIFY)

- B70-SF SINGLE FLANGE
- B70-DF DOUBLE FLANGE
- B70-C CORE ONLY
- OPENING WIDTH
- OPENING HEIGHT
- WHITE FINISH (STANDARD)
- SILVER FINISH
- BLACK FINISH
- SHORT VANE OPTION (LONG VANES STANDARD)
- NSH NO SCREW HOLES

STANDARD INDUSTRY TOLERANCES APPLY. SPECIFICATIONS ARE SUBJECT TO CHANGE WITHOUT NOTICE.

JOB NAME: _____

LOCATION: _____

ARCHITECT: _____

ENGINEER: _____

CONTRACTOR: _____

MODEL B70
DOOR/TRANSFER GRILLE

DRAWN BY: BMM DATE: 4-16-21 DWG. NO. B70