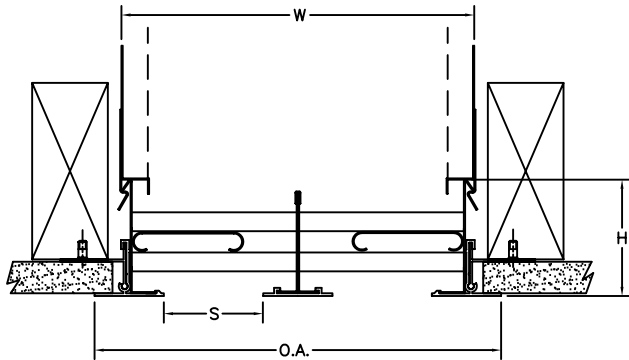
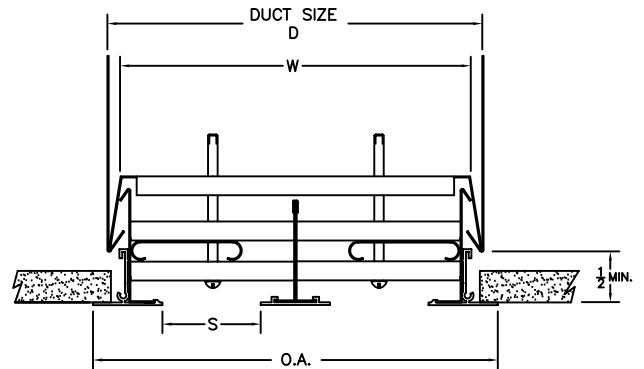


AIR DISTRIBUTION SUBMITTAL

FRAME-IN APPLICATION (FM) (SHOWN WITH SNAP-ON PLENUM)



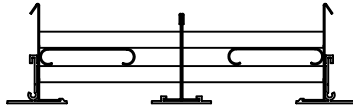
SURFACE MOUNT APPLICATION (SM) (SHOWN WITH HEMMED-EDGE PLENUM)



	SLOT WIDTH S	OVERALL WIDTH O.A.	DUCT WIDTH D	W	H
WF2000-10	1	6 $\frac{1}{8}$	5 $\frac{5}{8}$	5 $\frac{1}{8}$	2 $\frac{1}{4}$
WF2000-15	1 $\frac{1}{2}$	7 $\frac{1}{8}$	6 $\frac{5}{8}$	6 $\frac{1}{8}$	2 $\frac{1}{4}$
WF2000-20	2	8 $\frac{1}{8}$	7 $\frac{5}{8}$	7 $\frac{1}{8}$	2 $\frac{1}{4}$
WF2000-25	2 $\frac{1}{2}$	11 $\frac{3}{4}$	11 $\frac{1}{8}$	10 $\frac{5}{8}$	3
WF2000-30	3	12 $\frac{3}{4}$	12 $\frac{1}{8}$	11 $\frac{5}{8}$	3

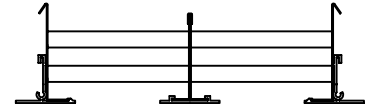
TWO SLOT SUPPLY

- WF2000ST-10 1" SLOT
- WF2000ST-15 1 1/2" SLOT
- WF2000ST-20 2" SLOT
- WF2000ST-25 2 1/2" SLOT
- WF2000ST-30 3" SLOT

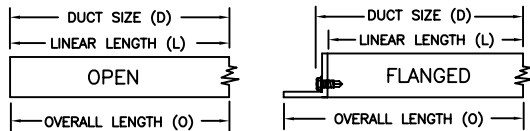


TWO SLOT RETURN

- WF2000R-10 1" SLOT
- WF2000R-15 1 1/2" SLOT
- WF2000R-20 2" SLOT
- WF2000R-25 2 1/2" SLOT
- WF2000R-30 3" SLOT



END VARIATION



LENGTH DIMENSIONS

OPEN-OPEN (OO)	FLANGE-OPEN (FO)	FLANGE-FLANGE (FF)
D = L	D = L + $\frac{1}{8}$	D = L + $\frac{1}{4}$
O = L	O = L + 1 $\frac{1}{8}$	O = L + 2 $\frac{1}{4}$

FEATURES

- FACE CONSTRUCTION OF HEAVY WALL ALUMINUM WITH WHITE FINISH
- PATTERN CONTROL AND FRAME MEMBERS CONSTRUCTED OF 24 GA. STEEL WITH BLACK FINISH.
- PATTERN CONTROL PROVIDES 180 DEGREE THROW ADJUSTMENT
- PATTERN CONTROL FURNISHED IN MULTIPLE SECTIONS FOR DIFFUSERS LONGER THAN 3FT.
- SECTIONS UP TO 8 FT. CAN BE PROVIDED
- CURVED SECTIONS AVAILABLE. CONTACT FACTORY
- BLANK OFF PANELS AVAILABLE. CONTACT FACTORY
- LIGHT SHIELDS AVAILABLE. CONTACT FACTORY

OPTIONS (SPECIFY)

- LINEAR LENGTH (L)
- END VARIATION (OO) (FO) (FF)
- SURFACE MOUNT (SM)
- FRAME-IN MOUNT (FM)

STANDARD INDUSTRY TOLERANCES APPLY. SPECIFICATIONS ARE SUBJECT TO CHANGE WITHOUT NOTICE.

JOB NAME: _____
 LOCATION: _____
 ARCHITECT: _____
 ENGINEER: _____
 CONTRACTOR: _____

WF2000 ST TWO SLOT STANDARD THROW WIDE FLOW LINEAR DIFFUSER

DRAWN BY: JLH DATE: 9-10-02 DWG. NO.: WF2000ST-2B

P.O. BOX 250
 ALBION, IOWA 50005
 PH. (641) 488-2211 FAX (641) 488-2796
 www.raymon-hvac.com



RAYMON
 DONCO AIR DISTRIBUTION EQUIPMENT