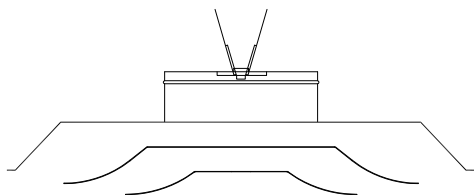

TWIST CONTROL DAMPER

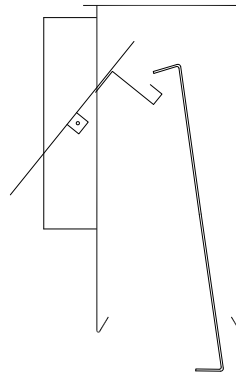
- SINGLE BLADE AT INLET COLLAR.
- ACCESSIBLE THROUGH THE AIR SLOT WITH A SCREWDRIVER TYPE TOOL (INCLUDED)
- DAMPER TOOL HAS BALL-END HEX TO ALLOW ACCESS AT AN ANGLE.
- POP RIVET FASTENING AT PIVOT POINT PROVIDES FRICTION TO HOLD POSITION.
- FLUSH POP RIVET HEAD DOES NOT INTERFERE WITH DUCT CONNECTION


BUTTERFLY DAMPER (SHOWN)

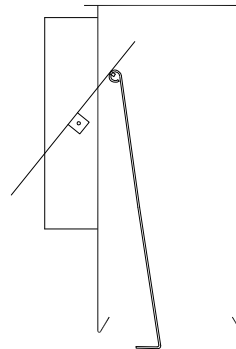
- TWO BLADE DAMPER
- ADJUSTABLE WITH HEX KEY TOOL.
- USED PRIMARILY ON 24X24 PRODUCTS SUCH AS LFSD, PRO2, RPR, ACD, ETC.

RADIAL DAMPER

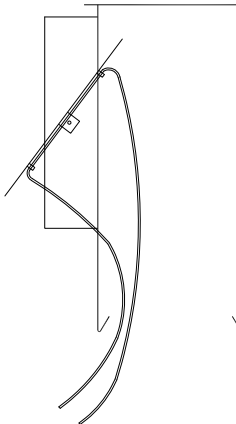
- MULTI-BLADE (BOW TIE) STYLE.
- ADJUSTABLE WITH STD SCREWDRIVER.
- USED PRIMARILY ON 24X24 PRODUCTS SUCH AS LFSD, PRO2, RPR, ACD, ETC.


STANDARD INLET DAMPER

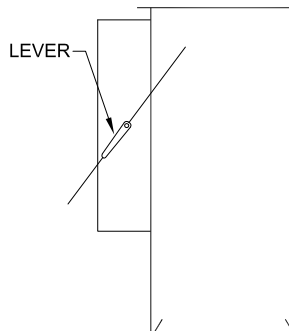
- SINGLE BLADE
- ACCESSIBLE THROUGH AIR SLOT WITH WIRE TOOL (SHIPPED LOOSE)
- POP RIVET FASTENING AT PIVOT POINT PROVIDES FRICTION TO HOLD POSITION.
- FLUSH POP RIVET HEAD DOES NOT INTERFERE WITH DUCT CONNECTION.


ROD CONTROL DAMPER

- SAME AS STANDARD EXCEPT ROD STAYS CONNECTED TO DAMPER BLADE.
- NOT RECOMMENDED WHEN DIFFUSER DEFLECTORS LEAVE LIMITED SPACE FOR ROD.


CORD CONTROL DAMPER

- SAME AS STANDARD EXCEPT WITH NYLON PULL CORDS FOR CONTROL.
- IDEAL WHEN DEFLECTORS LIMIT ACCESS WITH RIGID ROD OR WIRE TOOL.


LEVER CONTROL DAMPER

- SINGLE BLADE
- ADJUSTS WITH LEVER CONTROL ON OUTSIDE OF INLET COLLAR.
- WINGNUT ALLOWES FOR LOCKING DAMPER IN POSITION.

JOB NAME: _____

LOCATION: _____

ARCHITECT: _____

ENGINEER: _____

CONTRACTOR: _____

INLET DAMPER OPTIONS

DRAWN BY: RBJ DATE: 10-21-2015 DWG. NO. DAMP