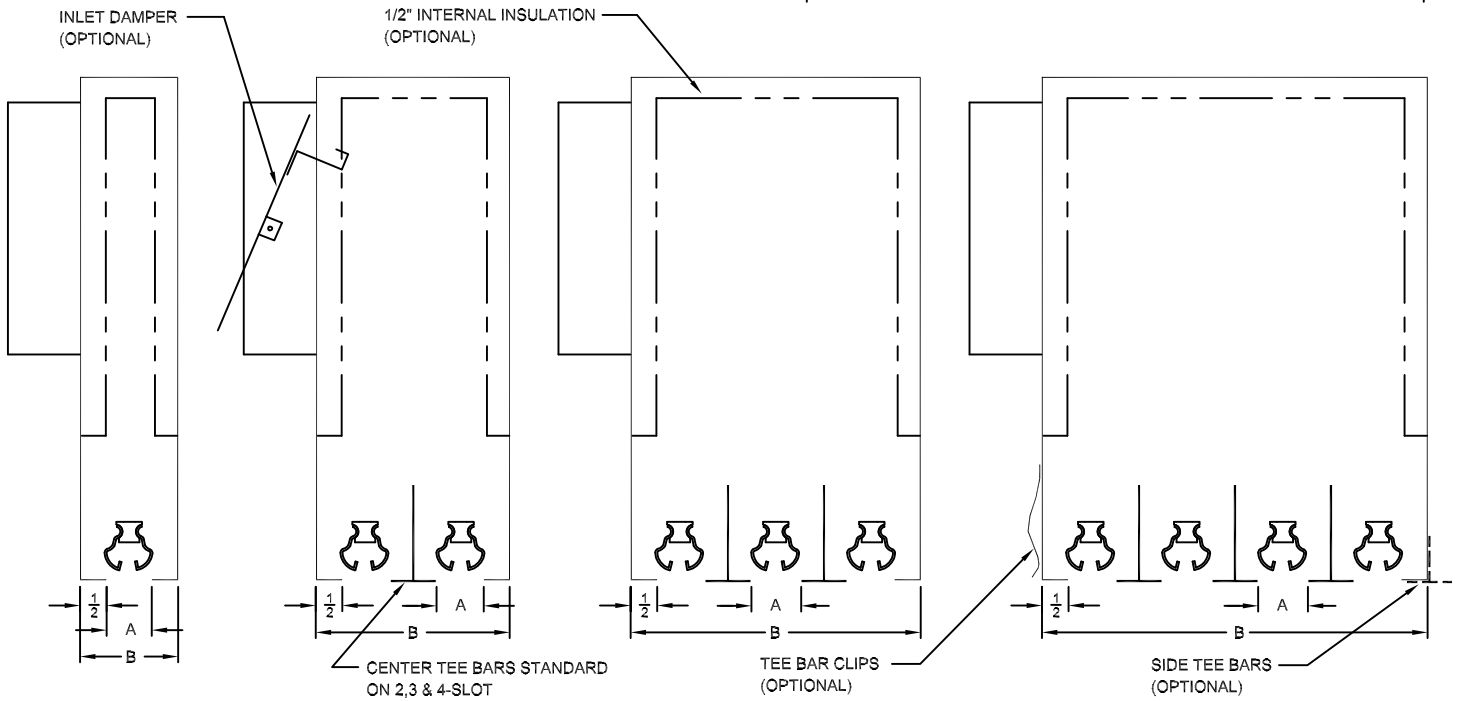
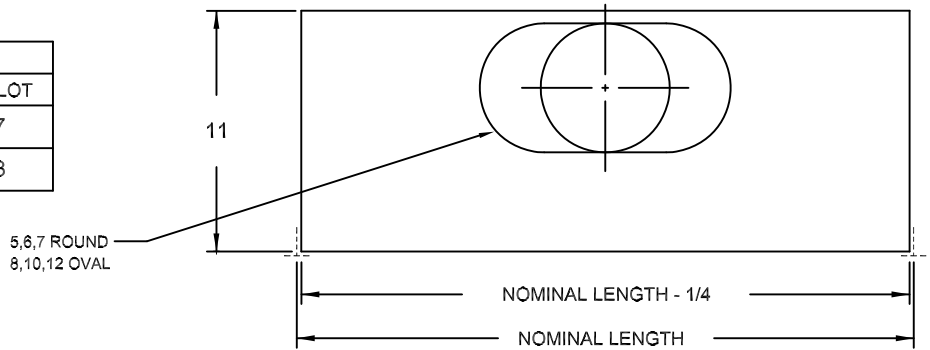
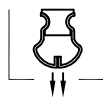
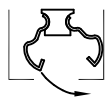
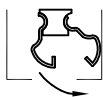
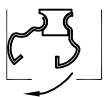


SLOT WIDTH A	DIFFUSER WIDTH B			
	1-SLOT	2-SLOT	3-SLOT	4-SLOT
$\frac{3}{4}$	$1\frac{3}{4}$	$3\frac{1}{2}$	$5\frac{1}{4}$	7
1	2	4	6	8


FEATURES

- MATERIAL: 24 GAUGE GALVANNEALED STEEL. ALL EXPOSED SURFACES PAINTED FLAT BLACK. TEE BARS ARE WHITE.
- AVAILABLE IN NOMINAL LENGTHS FROM 24 TO 60 INCH.
- INLET SIZES: 5,6,7 INCH ROUND. 8,10,12 INCH OVALS.
- ADJUSTABLE PATTERN CONTROLLERS ALLOW 180 DEGREE ADJUSTMENT OF DISCHARGE DIRECTION AS WELL AS VOLUME CONTROL.


OPTIONS (SPECIFY)

- STEEL UNINSULATED
- STEEL WITH INTERNAL INSULATION
- STEEL WITH EXTERNAL INSULATION
- INLET DAMPER
- TEE BAR CLIPS
- NOMINAL LENGTH
- NUMBER OF SLOTS
- SLOT WIDTH
- INLET SIZE
- INSTALLED TEE BARS (QUANTITY & LOCATION)

STANDARD INDUSTRY TOLERANCES APPLY. SPECIFICATIONS ARE SUBJECT TO CHANGE WITHOUT NOTICE.

JOB NAME: _____

LOCATION: _____

ARCHITECT: _____

ENGINEER: _____

CONTRACTOR: _____

**MODEL SAT
PLENUM SLOT DIFFUSER**

DRAWN BY: RBJ DATE: 08-22-01 DWG. NO. SAT

RAYMON P.O. BOX 250 ALBION, IOWA 50005 www.raymon-hvac.com