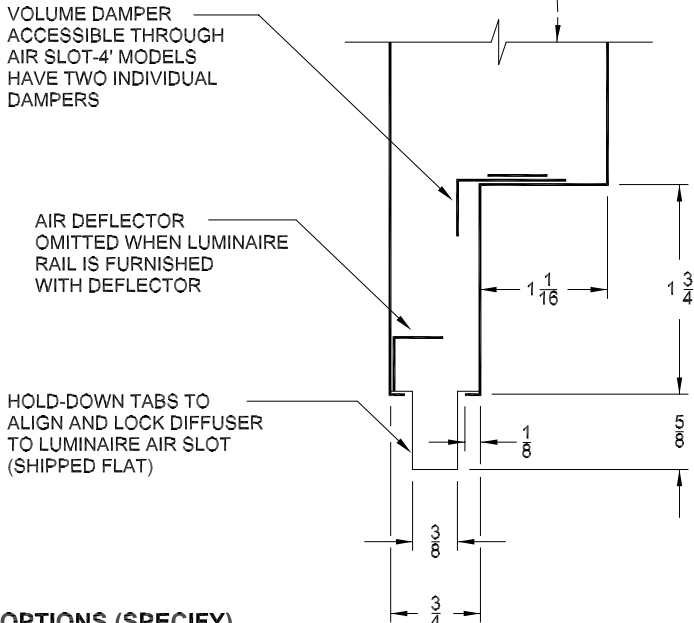
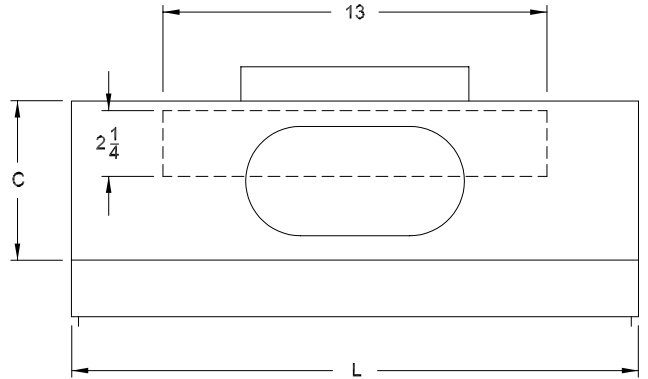
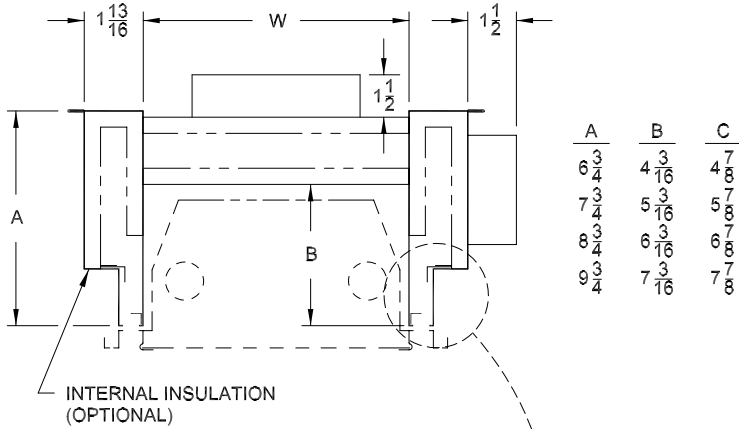


AIR DISTRIBUTION SUBMITTAL



FEATURES

- DIFFUSERS ARE AVAILABLE AS SUPPLY OR RETURN UNITS FOR REGRESSED OR FLUSH AIR HANDLING LUMINAIRES.
- MATERIAL: GALVANNEALED STEEL. EXPOSED SLOT AREA PAINTED FLAT BLACK.
- DIFFUSER (EXCEPT 4 x 4 MODELS) NORMALLY SHIPPED FULLY ASSEMBLED, READY FOR JOB SITE INSTALLATION. SPECIFY FOR CROSSOVER AND DIFFUSERS UNASSEMBLED.
- INLETS: 5" AND 6" OVAL STANDARD ON SIDE ENTRY. ROUND ON TOP ENTRY. OTHER SIZES AVAILABLE ON REQUEST.

OPTIONS (SPECIFY)

- STEEL UNINSULATED
- STEEL WITH 1/2" INTERNAL INSULATION
- STEEL WITH 1/2" FSK EXTERNAL INSULATION

DETAIL COORDINATION DRAWING OF TROFFER DIFFUSER AND SPECIFIC JOB LUMINAIRE AVAILABLE FROM FACTORY ON REQUEST.

STANDARD INDUSTRY TOLERANCES APPLY. SPECIFICATIONS ARE SUBJECT TO CHANGE WITHOUT NOTICE.

LUMINAIRE SIZE	AIR DIFFUSER DIM.		SPECIFY LUMINAIRE MANUFACTURER AND MODEL NUMBER
	W	L	
1 x 4	9	40	
2 x 2	21	20	
3 x 3	33	27	
2 x 4	21	40	
4 x 4	45	40	

NOTE: STANDARD DIFFUSER DIMENSIONS ARE STATED. DIMENSIONS A, B, C, W AND L WILL VARY WITH LUMINAIRE MANUFACTURER TO INSURE COMPATIBILITY, LIST LUMINAIRE MANUFACTURER AND MODEL NUMBER. CEILING CLEARANCE REQUIRED IS DIFFUSER HEIGHT PLUS 1/4", PLUS AMOUNT TROFFER SLOT IS REGRESSED ABOVE CEILING LINE. TOP INLET UNITS EXTEND ABOVE THIS DIMENSION.

JOB NAME: _____
 LOCATION: _____
 ARCHITECT: _____
 ENGINEER: _____
 CONTRACTOR: _____

MODELS S-214 S-222 S-233 S-224 S-244 DUAL SIDE STEEL INSULATED OR UNINSULATED DIFFUSER

DRAWN BY: MTV DATE: 3-21-05 DWG. NO.: S-200

P.O. BOX 250
 ALBION, IOWA 50005
 PH. (641) 488-2211 FAX (641) 488-2796
 www.raymon-hvac.com



RAYMON
 DONCO AIR DISTRIBUTION EQUIPMENT