

# AIR DISTRIBUTION SUBMITTAL

## QUICK MOUNT UTILITY FRAME

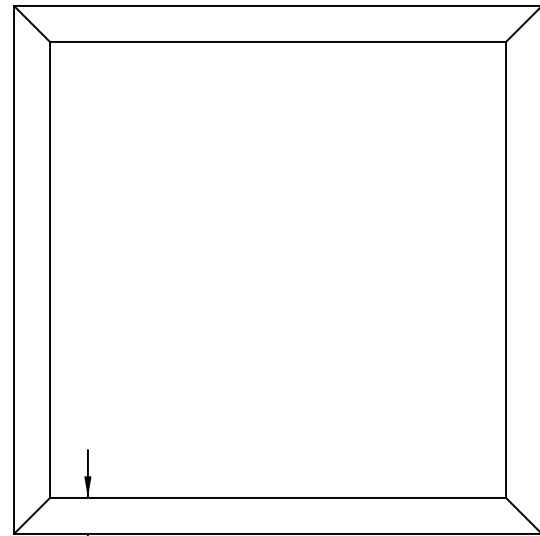
The Quick Mount Utility Frames allow surface mount installation of ceiling diffusers in plaster or gypsum ceilings.

The special mounting brackets provide a secure installation to the ceiling. Diffusers or other devices may require independent support.

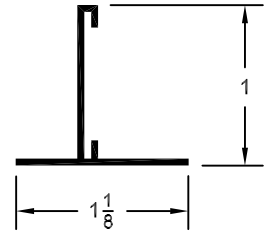
The standard 24" frame will accept 23 3/4" lay-in diffusers. This also allows access to service utilities above the ceiling by raising the diffuser and flexible duct.

## FEATURES

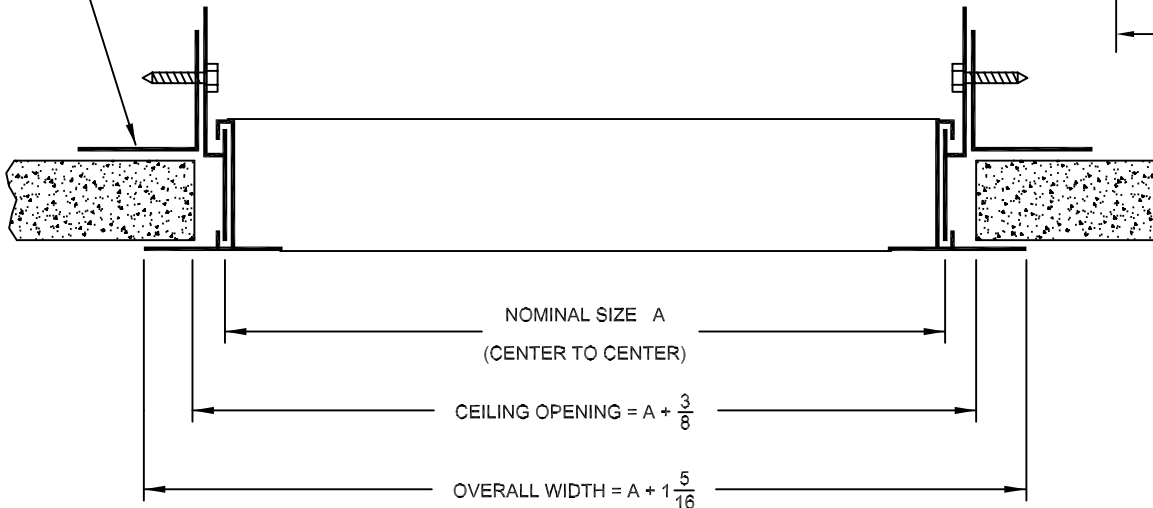
- EXTRUDED ALUMINUM CONSTRUCTION WITH MECHANICALLY FASTENED MITERED CORNERS.
- WHITE FINISH STANDARD.
- EACH FRAME INCLUDES EIGHT MOUNTING BRACKETS AND SCREWS.
- STANDARD SIZES: 24 X 24, 12 X 12, 12 X 24.
- OTHER SIZES AND FASTENING METHODS ARE AVAILABLE. CONTACT FACTORY.



1-1/8" FRAME WIDTH



MOUNTING BRACKET IS ADJUSTABLE TO CEILINGS FROM 1/2 TO 7/8 INCH THICK.



STANDARD INDUSTRY TOLERANCES APPLY. SPECIFICATIONS ARE SUBJECT TO CHANGE WITHOUT NOTICE.

WHEN ORDERING NON-STANDARD SIZES, SPECIFY OVERALL DIFFUSER FACE DIMENSIONS THAT THE FRAMES ARE TO FIT.

JOB NAME: \_\_\_\_\_  
 LOCATION: \_\_\_\_\_  
 ARCHITECT: \_\_\_\_\_  
 ENGINEER: \_\_\_\_\_  
 CONTRACTOR: \_\_\_\_\_

## QUICK MOUNT UTILITY FRAMES

DRAWN BY  
RBJ

DATE  
9-14-05

DWG. NO.  
QM

P.O. BOX 250  
 ALBION, IOWA 50005  
 PH. (641) 488-2211 FAX (641) 488-2796  
 www.raymon-hvac.com



**RAYMON**  
 DONCO AIR DISTRIBUTION EQUIPMENT