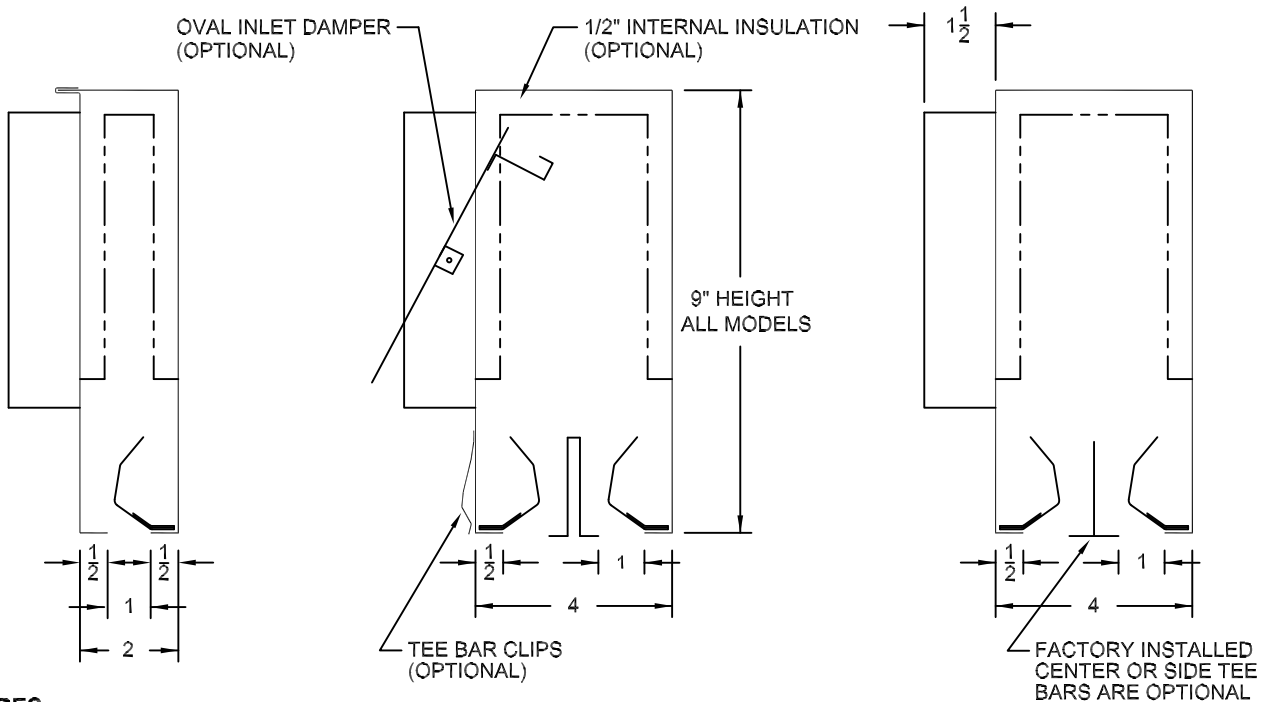
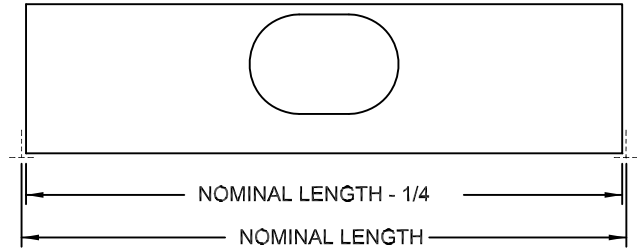


At only 9" of height, the E-Series requires minimum space but provides maximum performance and flexibility for interior or perimeter applications.

The E-Series features the same aerodynamically curved control vane used in our J-slot. It maintains an air pattern tight against the ceiling in constant or variable air control systems.



**FEATURES**

- PATTERN CONTROL VANES ARE SHIPPED LOOSE TO ALLOW FIELD INSTALLATION FOR LEFT OR RIGHT THROW. CONTROL VANES CAN BE FACTORY INSTALLED AT AN ADDITIONAL CHARGE.
- CONTROL VANES HAVE DOUBLE METAL THICKNESS AT SLOT FACE FOR ADDITIONAL STRENGTH AND RIGIDITY.
- LENGTHS GREATER THAN 36" HAVE TWO VANES PER SLOT.
- MATERIAL: 24 GAUGE GALVANNEALED STEEL. ALL EXPOSED SURFACES AND CONTROL VANES ARE BLACK. FACTORY INSTALLED TEE BARS ARE WHITE.
- AVAILABLE IN NOMINAL LENGTHS FROM 24 TO 60 INCH.
- INLET SIZES: 5, 6, 7, 8, 10, 12 INCH OVALS.
- SLOT WIDTH IS 1 INCH.
- CONTACT FACTORY FOR AVAILABILITY OF DIFFUSERS FOR SPECIAL CEILING APPLICATIONS.

**OPTIONS (SPECIFY)**

- NON-INSULATED
- INTERNALLY INSULATED (STANDARD LINER)
- FOIL-FACED INTERNAL INSULATION
- FOIL-FACED EXTERNAL INSULATION
- INLET DAMPER (OVAL)
- TEE BAR CLIPS
- CENTER NOTCH FOR 2X2 CEILINGS (48" MODELS)
- \_\_\_ NOMINAL LENGTH
- \_\_\_ NUMBER OF SLOTS
- \_\_\_ INLET SIZE (OVAL)
- \_\_\_ FACTORY TEE BARS (QUANTITY & LOCATION)
- \_\_\_ SPECIFY CEILING MANUFACTURER IF OTHER THAN STANDARD 15/16 GRID.

*STANDARD INDUSTRY TOLERANCES APPLY. SPECIFICATIONS ARE SUBJECT TO CHANGE WITHOUT NOTICE.*

JOB NAME: \_\_\_\_\_  
 LOCATION: \_\_\_\_\_  
 ARCHITECT: \_\_\_\_\_  
 ENGINEER: \_\_\_\_\_  
 CONTRACTOR: \_\_\_\_\_

### MODEL E-SERIES PLENUM SLOT DIFFUSERS

DRAWN BY: RBJ      DATE: 10-10-96      DWG. NO. E-12

**RAYMON** P.O. BOX 250 ALBION, IOWA 50005 www.raymon-hvac.com