

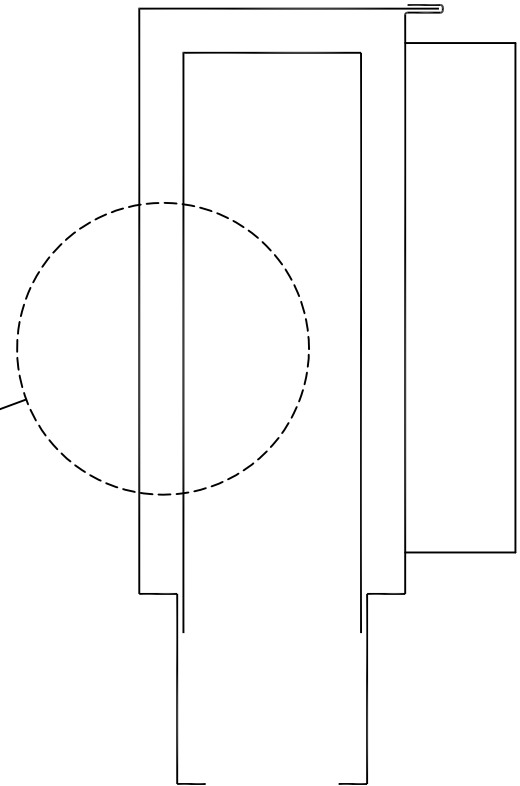
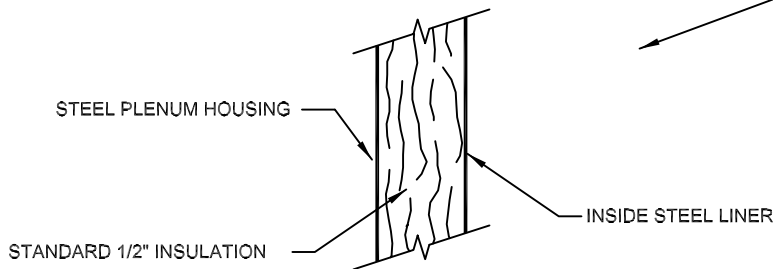
# AIR DISTRIBUTION SUBMITTAL

## DOUBLE WALL CONSTRUCTION

Air quality problems caused by bacteria and other contaminants that can embed in fibrous materials are of special concern in environments such as hospitals, laboratories and food or pharmaceutical plants. In those special cases where additional erosion or contamination protection is desired, we can provide a double wall construction diffuser.

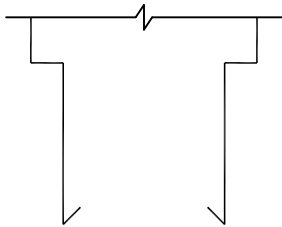
The double wall option features the standard outside steel housing with an additional inside steel liner that provides a barrier between the insulation and the air stream.

This option can be specified for special applications or those that could require scrubbing or cleaning of the internal liner.

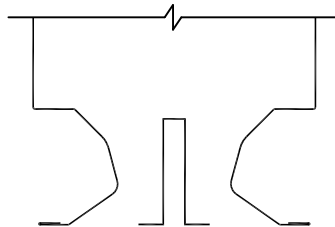


## DIFFUSER CONFIGURATIONS

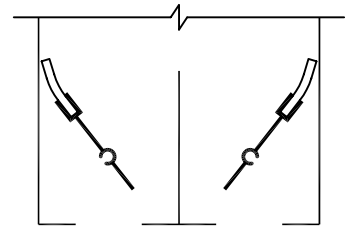
The double wall option is available on the Donco products shown below. Contact factory for availability on the other products not shown.



**DP SERIES**  
DISTRIBUTION PLENUMS



**J-SERIES**  
FIXED VANE DIFFUSER



**DCD SERIES**  
ADJUSTABLE VANE DIFFUSER

STANDARD INDUSTRY TOLERANCES APPLY. SPECIFICATIONS ARE SUBJECT TO CHANGE WITHOUT NOTICE.

JOB NAME: \_\_\_\_\_  
 LOCATION: \_\_\_\_\_  
 ARCHITECT: \_\_\_\_\_  
 ENGINEER: \_\_\_\_\_  
 CONTRACTOR: \_\_\_\_\_

## DOUBLE WALL DIFFUSERS

DRAWN BY  
MTV

DATE  
9-14-94

DWG. NO.  
DW

P.O. BOX 250  
 ALBION, IOWA 50005  
 PH. (641) 488-2211 FAX (641) 488-2796  
 www.raymon-hvac.com



**RAYMON**  
DONCO AIR DISTRIBUTION EQUIPMENT