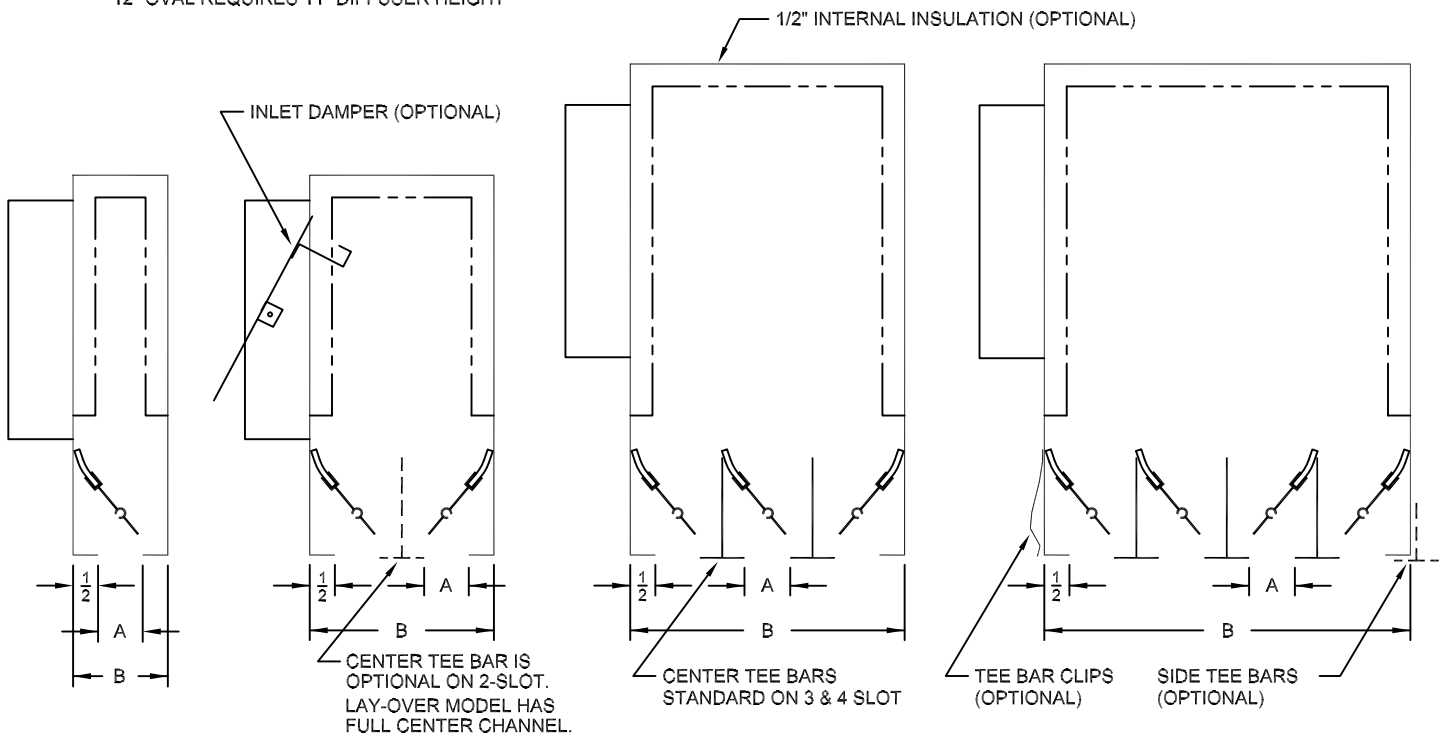
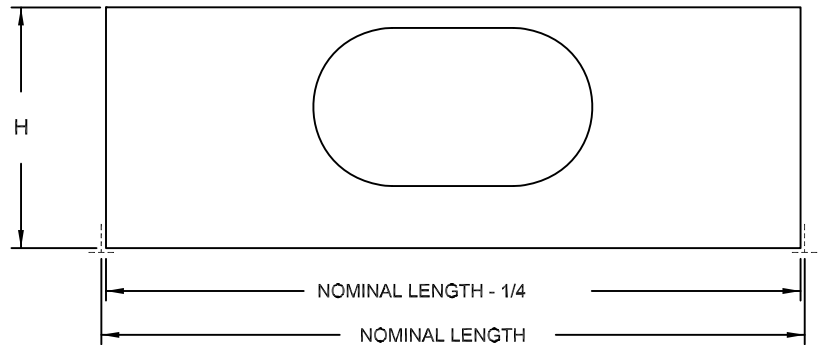


| SLOT WIDTH A | DIFFUSER WIDTH B | | | |
|----------------|------------------|----------------|----------------|--------|
| | 1-SLOT | 2-SLOT | 3-SLOT | 4-SLOT |
| $\frac{3}{4}$ | $1\frac{3}{4}$ | $3\frac{1}{2}$ | $5\frac{1}{4}$ | 7 |
| 1 | 2 | 4 | 6 | 8 |
| $1\frac{1}{2}$ | $2\frac{1}{2}$ | 5 | $7\frac{1}{2}$ | 10 |

| DIFFUSER HEIGHT H | | | |
|-------------------|--------|--------|--------|
| 1-SLOT | 2-SLOT | 3-SLOT | 4-SLOT |
| 8 | 8 | 11 | 11 |

12" OVAL REQUIRES 11" DIFFUSER HEIGHT



FEATURES

- MATERIAL: 24 GAUGE GALVANNEALED STEEL. ALL EXPOSED SURFACES PAINTED FLAT BLACK. TEE BARS ARE WHITE.
- AVAILABLE IN NOMINAL LENGTHS FROM 24 TO 60 INCH. INLET SIZES: 6,8,10,12 INCH OVALS.
- ALUMINUM VANE WITH FELT SEAL IS FULLY ADJUSTABLE FROM THE FACE FOR LEFT, RIGHT OR VERTICAL THROW.
- DESIGNED FOR VARIABLE OR CONSTANT VOLUME SYSTEMS. HEATING OR COOLING.
- MAXIMUM PERFORMANCE AND FLEXIBILITY FOR INTERIOR OR PERIMETER APPLICATIONS IN A VARIETY OF CEILING SYSTEMS.

OPTIONS (SPECIFY)

- STEEL UNINSULATED
- STEEL WITH INTERNAL INSULATION
- STEEL WITH EXTERNAL INSULATION
- INLET DAMPER (OVAL)
- TEE BAR CLIPS
- NOMINAL LENGTH
- NUMBER OF SLOTS
- SLOT WIDTH
- INLET SIZE
- INSTALLED TEE BARS (QUANTITY & LOCATION)

STANDARD INDUSTRY TOLERANCES APPLY. SPECIFICATIONS ARE SUBJECT TO CHANGE WITHOUT NOTICE.

JOB NAME: _____
 LOCATION: _____
 ARCHITECT: _____
 ENGINEER: _____
 CONTRACTOR: _____

MODEL DCDT PLENUM SLOT DIFFUSER

DRAWN BY: RBJ DATE: 01-15-01 DWG. NO. DCDT

RAYMON P.O. BOX 250 ALBION, IOWA 50005 www.raymon-hvac.com