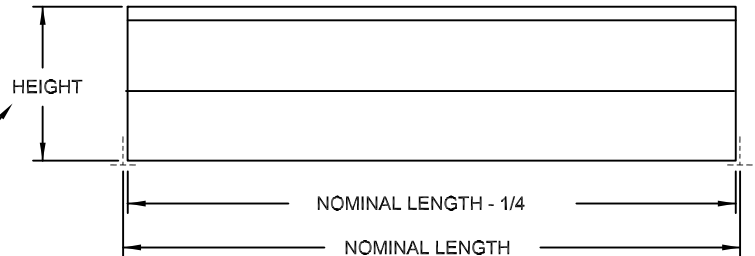
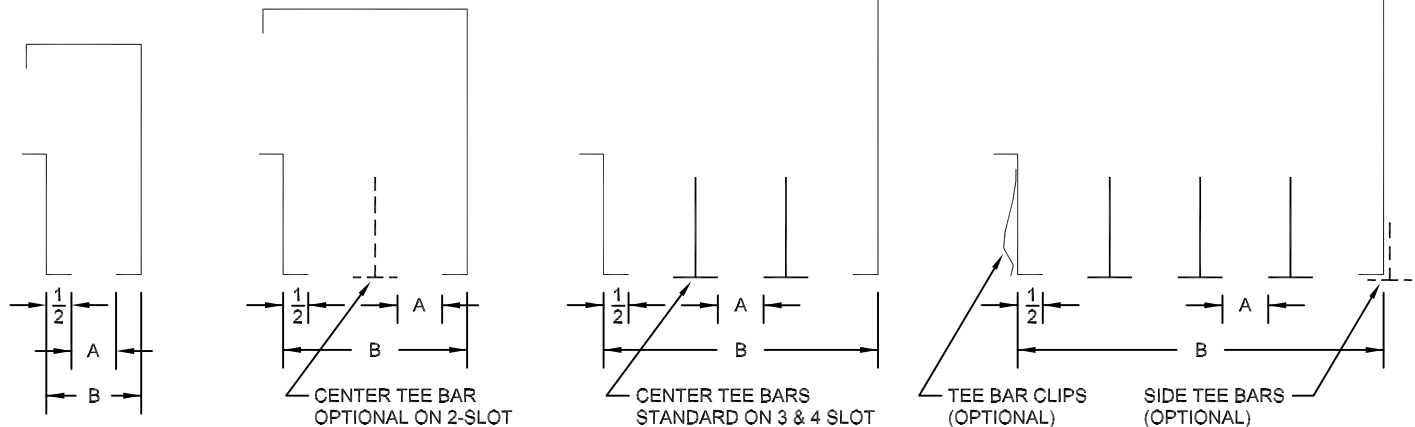


SLOT WIDTH A	DIFFUSER WIDTH B			
	1-SLOT	2-SLOT	3-SLOT	4-SLOT
$\frac{3}{4}$	$1\frac{3}{4}$	$3\frac{1}{2}$	$5\frac{1}{4}$	7
1	2	4	6	8
$1\frac{1}{2}$	$2\frac{1}{2}$	5	$7\frac{1}{2}$	10

HEIGHT VARIES FROM 4" TO 9" BASED ON WIDTH



1/2" INTERNAL INSULATION (OPTIONAL)



### FEATURES

- MATERIAL: 24 GAUGE GALVANNEALED STEEL. ALL EXPOSED SURFACES PAINTED FLAT BLACK. TEE BARS ARE WHITE.
- AVAILABLE IN NOMINAL LENGTHS FROM 12 TO 60 INCH.
- MAXIMUM PERFORMANCE AND FLEXIBILITY FOR INTERIOR OR PERIMETER APPLICATIONS IN A VARIETY OF CEILING APPLICATIONS.

### OPTIONS (SPECIFY)

- ☐ STEEL NON-INSULATED
- ☐ STEEL WITH INTERNAL INSULATION
- ☐ TEE BAR CLIPS
- ☐ CENTER NOTCH FOR 2 X 2 GRID
- \_\_\_ NOMINAL LENGTH
- \_\_\_ NUMBER OF SLOTS
- \_\_\_ SLOT WIDTH
- \_\_\_ INSTALLED TEE BARS (QUANTITY & LOCATION)

STANDARD INDUSTRY TOLERANCES APPLY. SPECIFICATIONS ARE SUBJECT TO CHANGE WITHOUT NOTICE.

JOB NAME: \_\_\_\_\_

LOCATION: \_\_\_\_\_

ARCHITECT: \_\_\_\_\_

ENGINEER: \_\_\_\_\_

CONTRACTOR: \_\_\_\_\_

### MODEL DCDR OPEN RETURN DIFFUSER

DRAWN BY: RBJ DATE: 05-02-05 DWG. NO. DCDR

**RAYMON** P.O. BOX 250 ALBION, IOWA 50005 www.raymon-hvac.com