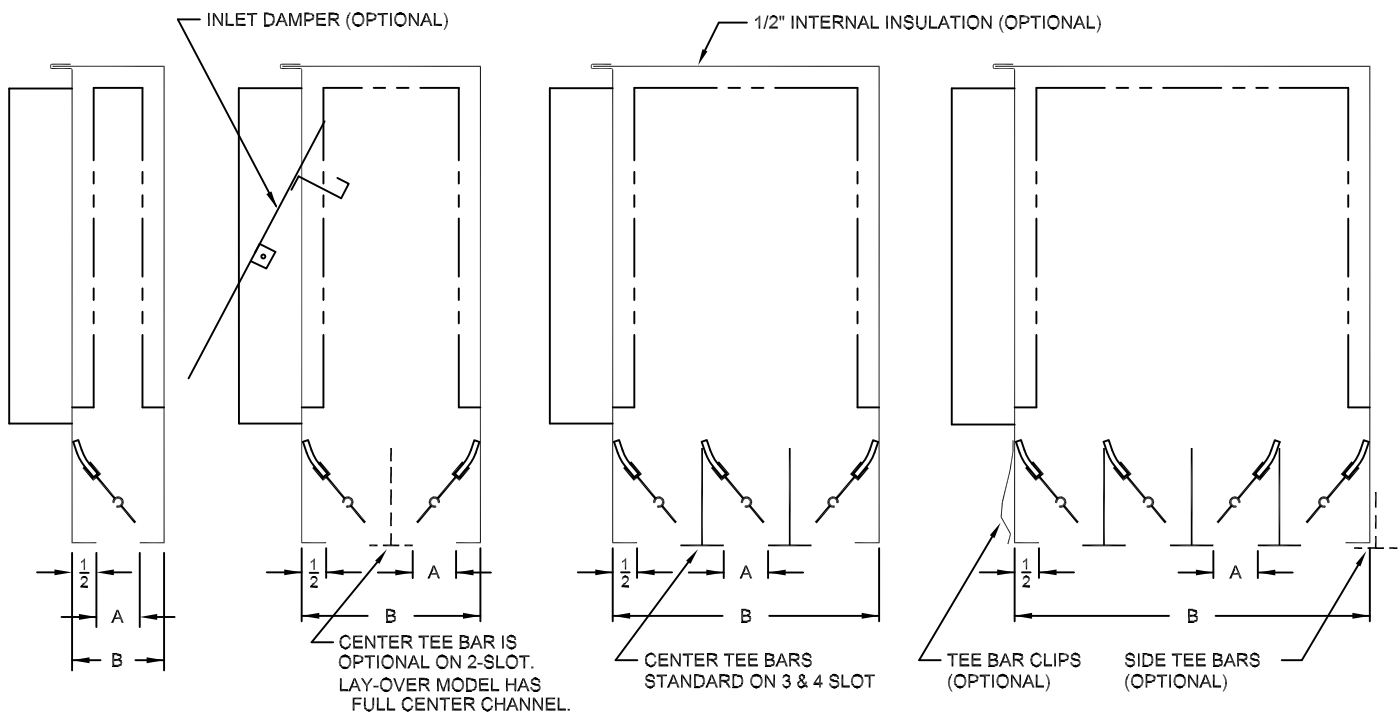
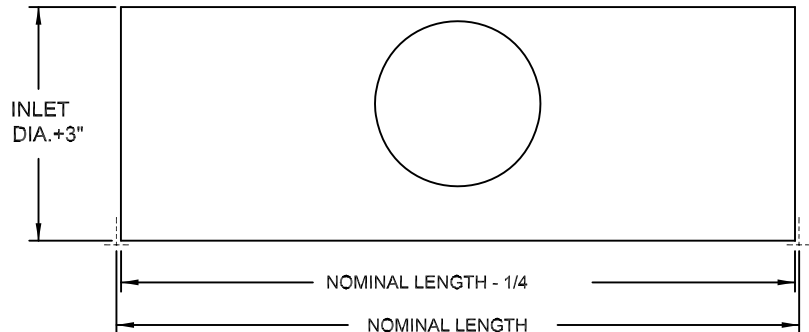


SLOT WIDTH A	DIFFUSER WIDTH B			
	1-SLOT	2-SLOT	3-SLOT	4-SLOT
$\frac{3}{4}$	$1\frac{3}{4}$	$3\frac{1}{2}$	$5\frac{1}{4}$	7
1	2	4	6	8
$1\frac{1}{2}$	$2\frac{1}{2}$	5	$7\frac{1}{2}$	10


FEATURES

- MATERIAL: 24 GAUGE GALVANNEALED STEEL. ALL EXPOSED SURFACES PAINTED FLAT BLACK. TEE BARS ARE WHITE.
- AVAILABLE IN NOMINAL LENGTHS FROM 24 TO 60 INCH. INLET SIZES FROM 5 TO 12 INCH ROUND.
- ALUMINUM VANE WITH FELT SEAL IS FULLY ADJUSTABLE FROM THE FACE FOR LEFT, RIGHT OR VERTICAL THROW.
- DESIGNED FOR VARIABLE OR CONSTANT VOLUME SYSTEMS. HEATING OR COOLING.
- MAXIMUM PERFORMANCE AND FLEXIBILITY FOR INTERIOR OR PERIMETER APPLICATIONS IN A VARIETY OF CEILING SYSTEMS.

OPTIONS (SPECIFY)

- STEEL UNINSULATED
- STEEL WITH INTERNAL INSULATION
- STEEL WITH EXTERNAL INSULATION
- INLET DAMPER
- TEE BAR CLIPS
- NOMINAL LENGTH
- NUMBER OF SLOTS
- SLOT WIDTH
- INLET SIZE
- INSTALLED TEE BARS (QUANTITY & LOCATION)

STANDARD INDUSTRY TOLERANCES APPLY. SPECIFICATIONS ARE SUBJECT TO CHANGE WITHOUT NOTICE.

JOB NAME: _____
 LOCATION: _____
 ARCHITECT: _____
 ENGINEER: _____
 CONTRACTOR: _____

**MODEL DCD
PLENUM SLOT DIFFUSER**

DRAWN BY: RBJ DATE: 01-15-01 DWG. NO. DCD

RAYMON P.O. BOX 250 ALBION, IOWA 50005 www.raymon-hvac.com