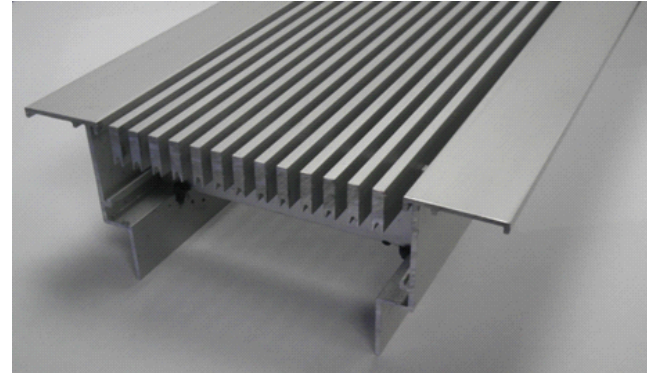
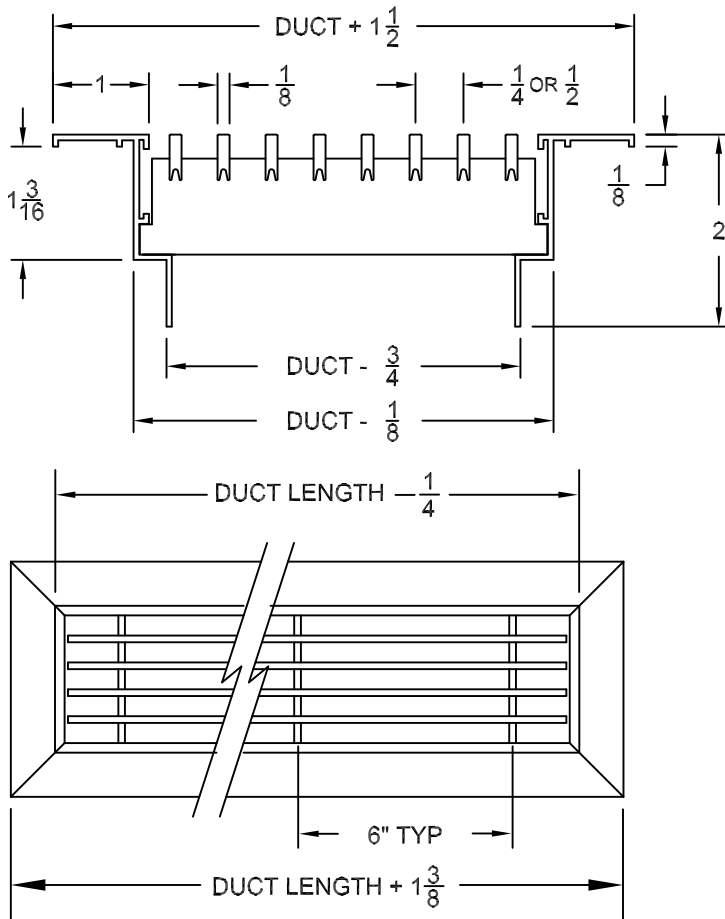




SUBMITTAL SHEET

DBG-400 SERIES LINEAR FLOOR MOUNT BAR GRILLES



DBG-420

1/8" WIDE BAR
1/4" SPACING
0 DEG. DEFLECTION



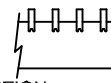
DBG-425

1/8" WIDE BAR
1/4" SPACING
15 DEG. DEFLECTION



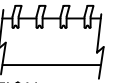
DBG-450

1/8" WIDE BAR
1/2" SPACING
0 DEG. DEFLECTION



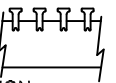
DBG-455

1/8" WIDE BAR
1/2" SPACING
15 DEG. DEFLECTION



DBG-480

1/4" WIDE BAR
1/2" SPACING
0 DEG. DEFLECTION

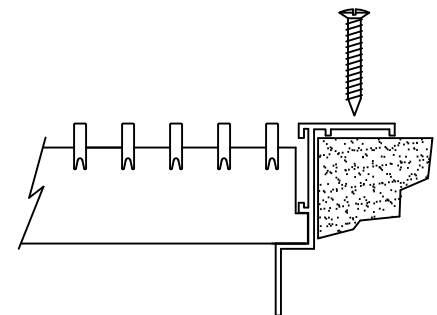


FEATURES

- ALL WELDED ALUMINUM CONSTRUCTION
- 1/8" WIDE FIXED POSITION BARS AT ZERO OR 15 DEG. DEFLECTION
- BAR CENTERLINE SPACINGS: 1/4" PENCIL-PROOF OR 1/2"
- END TERMINATIONS ARE MITERED
- WELDED CORE IS STANDARD. REMOVABLE CORE IS OPTIONAL.
- MINIMUM DUCT WIDTH IS 1 1/2", MAXIMUM DUCT WIDTH IS 8".
- MAXIMUM LENGTH PER SECTION IS 96"
- ALIGNMENT STRIPS PROVIDED FOR CONTINUOUS APPLICATIONS
- CLEAR ANODIZED FINISH AVAILABLE. CONTACT FACTORY.
- COLORED ANODIZED FINISHES AVAILABLE. CONTACT FACTORY.
- MITERED CUTS AND CORNERS AVAILABLE. CONTACT FACTORY.

OPTIONS (SPECIFY)

- ☐ DUCT LENGTH
- ☐ DUCT WIDTH
- ☐ BAR SPACING 1/4" 1/2"
- ☐ DEFLECTION 0 DEG. 15 DEG.
- ☐ FINISH
- ☐ REMOVABLE CORE
- ☐ SCREW HOLES (STANDARD)
- ☐ NO SCREW HOLES



SCREW FASTENING

COUNTERSUNK HOLES AND SCREWS PROVIDED

STANDARD INDUSTRY TOLERANCES APPLY. SPECIFICATIONS ARE SUBJECT TO CHANGE WITHOUT NOTICE.

JOB NAME: _____
 LOCATION: _____
 ARCHITECT: _____
 ENGINEER: _____
 CONTRACTOR: _____

DBG-400 SERIES LINEAR FLOOR MOUNT BAR GRILLES

DRAWN BY: RBJ DATE: 03-03-22 DWG. NO. DBG-400

RAYMON P.O. BOX 250 ALBION, IOWA 50005 www.raymon-hvac.com