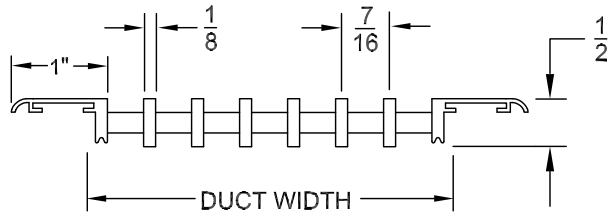
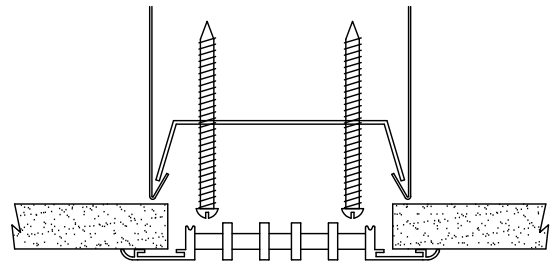
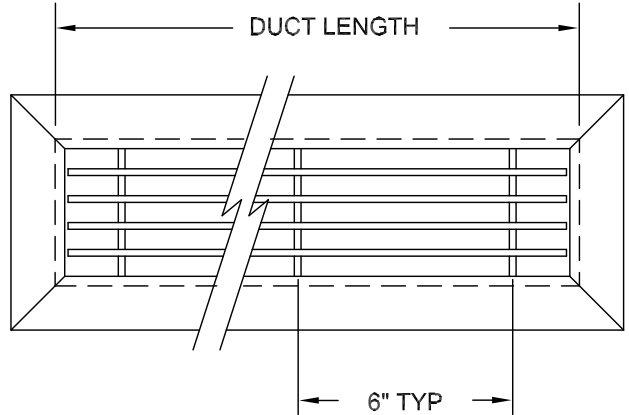


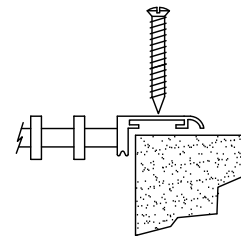
AIR DISTRIBUTION SUBMITTAL



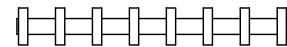
DUCT WIDTH	NUMBER OF BARS	
	W/FRAME	CORE ONLY
1 1/2	2	4
2	3	5
2 1/2	4	6
3	5	7
3 1/2	6	8
4	7	9
5	10	12
6	12	14
8	16	18
10	21	23
12	25	27



SURFACE MOUNT FASTENING
WITH CONCEALED MOUNT HARDWARE
(HEMMED DUCT REQUIRED)



SCREW FASTENING
COUNTERSUNK HOLES AND SCREWS PROVIDED



CORE ONLY OPTION
(NO FLANGED FRAME)

FEATURES

- ALL ALUMINUM CONSTRUCTION W/ 18-8 SST FASTENERS
- 1/8" WIDE FIXED POSITION BARS
- 7/16" CENTERLINE BAR SPACING
- MINIMUM DUCT WIDTH - 1 1/2"
- MAXIMUM LENGTH PER SECTION - 96"
- ALSO AVAILABLE AS CORE ONLY WITHOUT FLANGED FRAME
- PAINTED FINISH AVAILABLE IN ALUMINUM, RAYMON #26 WHITE OR BLACK. ALSO AVAILABLE WITH MILL FINISH. CONTACT FACTORY FOR OTHER SPECIAL COLORS.

OPTIONS (SPECIFY)

- DUCT LENGTH
- DUCT WIDTH
- CORE ONLY
- PAINTED ALUMINUM
- PAINTED WHITE FINISH
- PAINTED BLACK FINISH
- MILL FINISH
- SCREW FASTENING
- SURFACE MOUNT CONCEALED FASTENING
- NO FASTENERS, NO SCREW HOLES

STANDARD INDUSTRY TOLERANCES APPLY. SPECIFICATIONS ARE SUBJECT TO CHANGE WITHOUT NOTICE.

JOB NAME: _____
 LOCATION: _____
 ARCHITECT: _____
 ENGINEER: _____
 CONTRACTOR: _____

DBG-100 1/2" DEEP BAR GRILLE

DRAWN BY
JLH

DATE
2-25-13

DWG. NO.
DBG-100

P.O. BOX 250
 ALBION, IOWA 50005
 PH. (641) 488-2211 FAX (641) 488-2796
 www.raymon-hvac.com



RAYMON
DONCO AIR DISTRIBUTION EQUIPMENT