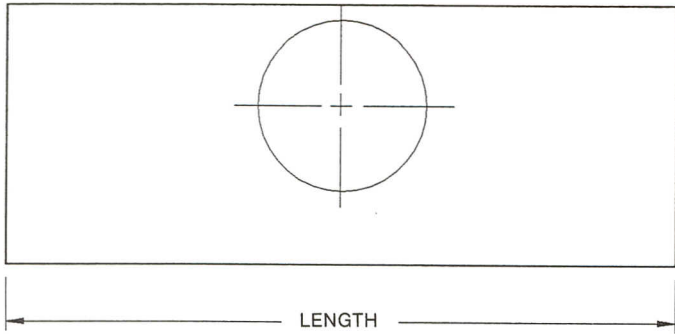


# AIR DISTRIBUTION SUBMITTAL



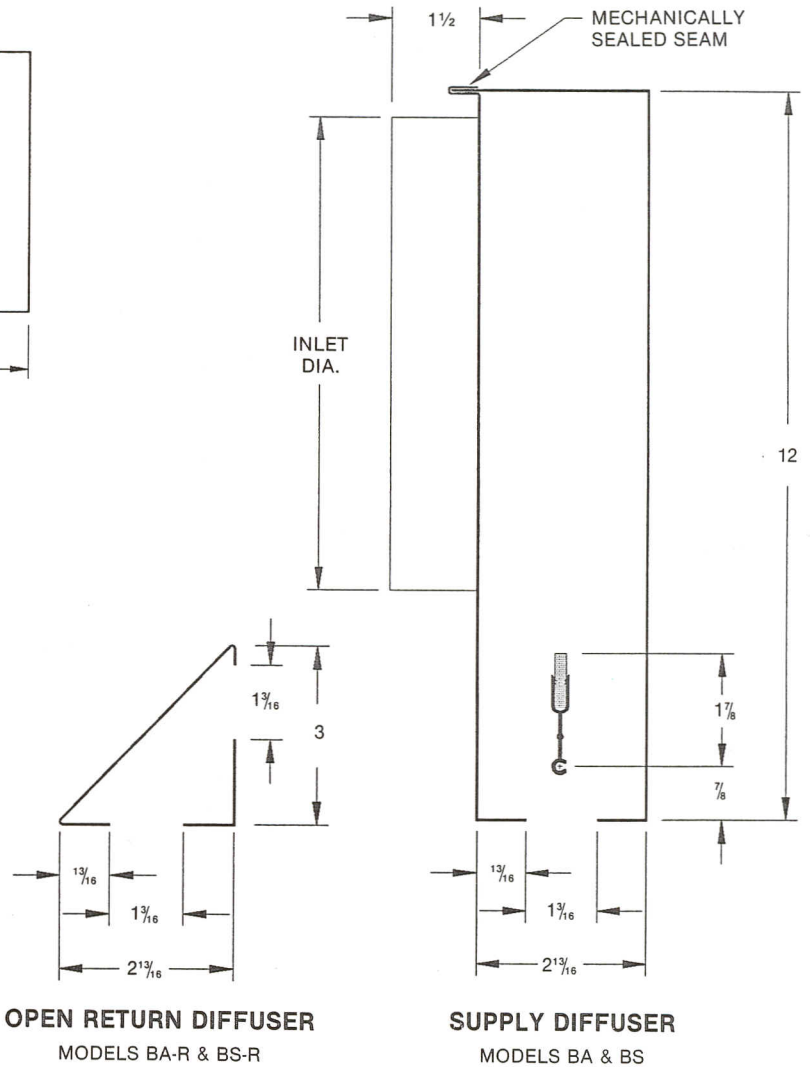
## OPTIONS (Specify)

	MODEL	INLET	LENGTH
<input type="checkbox"/>	BA-22	6"	22
<input type="checkbox"/>	BA-34	7"	34
<input type="checkbox"/>	BA-46	8"	46
<input type="checkbox"/>	BA-58	10" OVAL	58
<input type="checkbox"/>	BS-24	6"	23-3/4
<input type="checkbox"/>	BS-36	7"	35-3/4
<input type="checkbox"/>	BS-48	8"	47-3/4
<input type="checkbox"/>	BS-60	10" OVAL	59-3/4

- NO INSULATION
- INTERNAL INSULATION
- EXTERNAL INSULATION

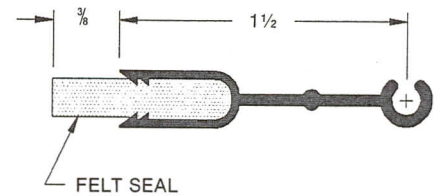
MATERIAL: 24 GAUGE GALVANNEALED STEEL WITH EXPOSED SURFACES AND PATTERN CONTROLLER PAINTED FLAT BLACK.

NECK OPENING IS LOCATED SO THAT BOTTOM OF INLET IS ABOVE AIR PATTERN CONTROLLER THROUGHOUT THE RANGE OF SETTINGS INCLUDING VERTICAL.



**OPEN RETURN DIFFUSER**  
MODELS BA-R & BS-R

**SUPPLY DIFFUSER**  
MODELS BA & BS



**AIR PATTERN CONTROLLER**

STANDARD INDUSTRY TOLERANCES APPLY. SPECIFICATIONS ARE SUBJECT TO CHANGE WITHOUT NOTICE.

JOB NAME: \_\_\_\_\_  
 LOCATION: \_\_\_\_\_  
 ARCHITECT: \_\_\_\_\_  
 ENGINEER: \_\_\_\_\_  
 CONTRACTOR: \_\_\_\_\_

## MODELS BA & BS SLOT DIFFUSERS

DRAWN BY  
RBJ

DATE  
11-3-88

DWG. NO.  
BA/BS



**RAYMON**  
DONCO AIR DISTRIBUTION EQUIPMENT

P.O. BOX 250  
 ALBION, IOWA 50005  
 PH. (641) 488-2211 FAX (641) 488-2796  
 www.raymon-hvac.com