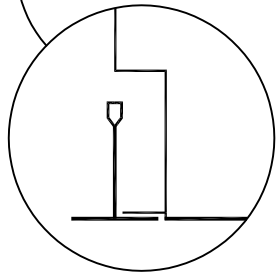
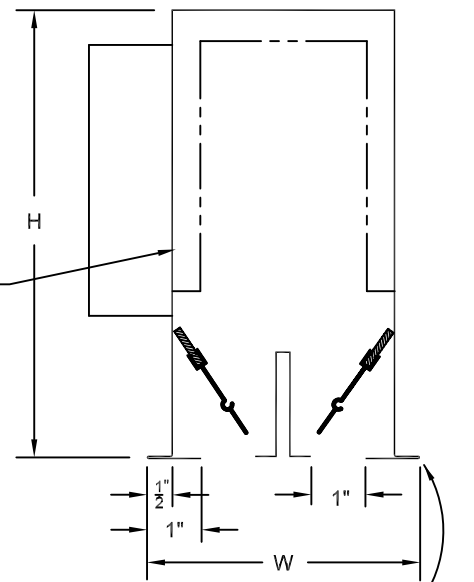
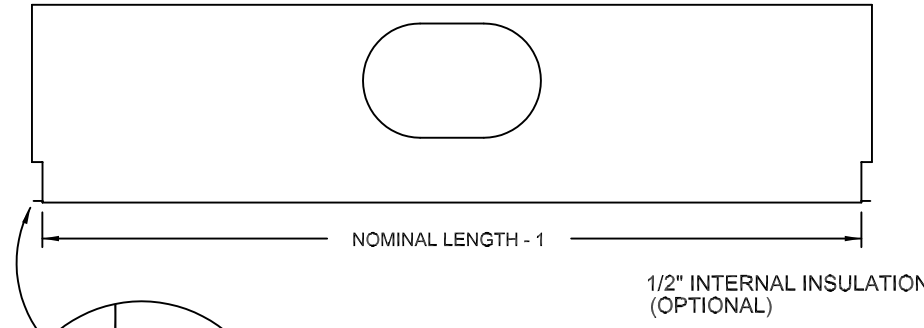


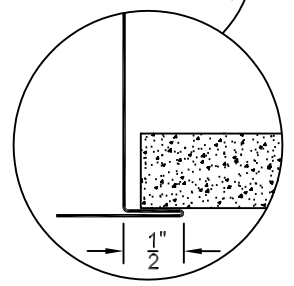
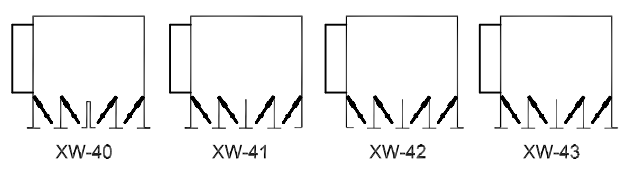
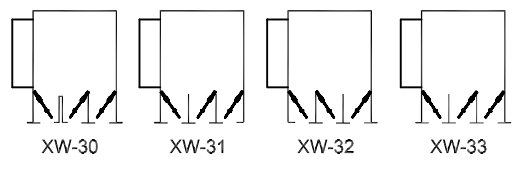
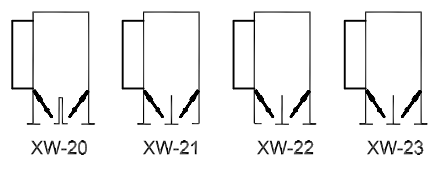
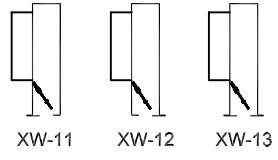
AIR DISTRIBUTION SUBMITTAL



# OF SLOTS	OVAL INLETS	HEIGHT H
1	6, 8, 10	8
1	12	11
2	6, 8, 10	8
2	12	11
3	6, 8, 10, 12	11
4	6, 8, 10, 12	11

MODELS	WIDTH W
11, 12	2-1/2
13	3
21, 22	4-1/2
20, 23	5
31, 32	6-1/2
30, 33	7
41, 42	8-1/2
40, 43	9

TILE FLANGE CONFIGURATIONS (MODELS)



FEATURES

- LOWER FLANGES PROVIDE TILE SUPPORT ELIMINATING THE NEED FOR ADDITIONAL CEILING TEES.
- MATERIAL: 24 GAUGE GALVANNEALED STEEL. EXPOSED SURFACES ARE WHITE AND DEFLECTORS ARE BLACK.
- ALUMINUM DEFLECTORS WITH EDGE SEAL ARE FULLY ADJUSTABLE FOR LEFT, RIGHT OR VERTICAL THROW.
- AVAILABLE IN NOMINAL LENGTHS FROM 24 TO 60 INCH.
- STANDARD SLOT WIDTH IS 1 INCH.
- STANDARD APPLICATION IS 15/16" TEE BAR LAY-IN. ALSO AVAILABLE FOR SURFACE MOUNT AND NARROW GRIDS. CONTACT FACTORY.

OPTIONS (SPECIFY)

- INTERNAL INSULATION
- EXTERNAL INSULATION
- ___ MODEL (EXAMPLE: XW-20)
- ___ NOMINAL LENGTH
- ___ INLET SIZE (OVAL)
- INLET DAMPER
- TEE BAR CLIPS
- CENTER NOTCH FOR 2X2 CEILING

STANDARD INDUSTRY TOLERANCES APPLY. SPECIFICATIONS ARE SUBJECT TO CHANGE WITHOUT NOTICE.

JOB NAME: _____
 LOCATION: _____
 ARCHITECT: _____
 ENGINEER: _____
 CONTRACTOR: _____

XW SERIES SLOT DIFFUSERS

DRAWN BY: RBJ DATE: 8-29-05 DWG. NO.: XW

P.O. BOX 250
 ALBION, IOWA 50005
 PH. (641) 488-2211 FAX (641) 488-2796
 www.raymon-hvac.com

