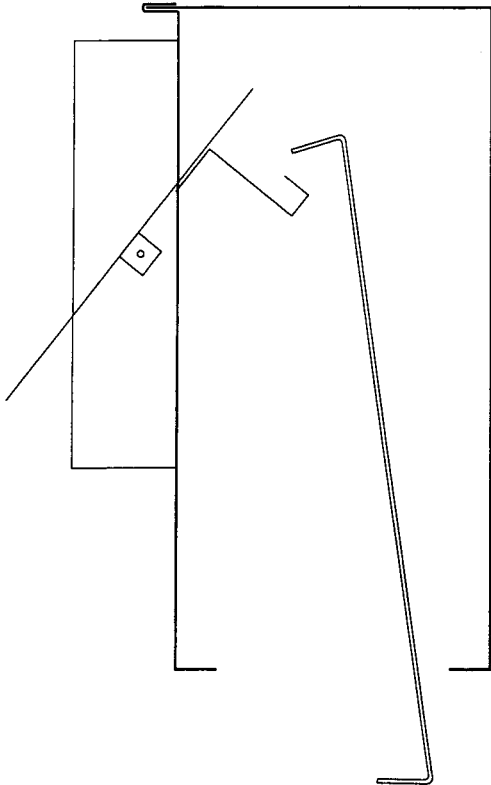
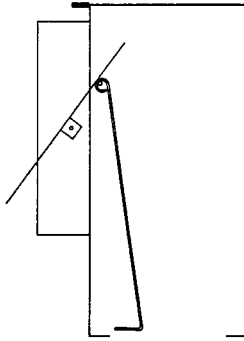


# AIR DISTRIBUTION SUBMITTAL



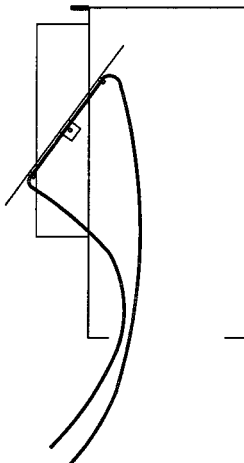
## STANDARD INLET DAMPER

- SINGLE BLADE
- ACCESSIBLE THROUGH THE AIR SLOT WITH A WIRE TOOL (SHIPPED LOOSE)
- POP RIVET FASTENING AT PIVOT POINT PROVIDES FRICTION TO HOLD BLADE POSITION.
- FLUSH POP RIVET HEAD DOES NOT INTERFERE WITH DUCT CONNECTION



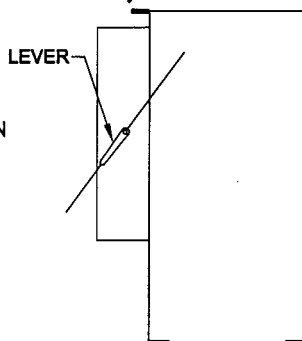
## ROD CONTROL DAMPER

- SAME AS STANDARD EXCEPT ROD STAYS CONNECTED TO DAMPER BLADE.
- NOT RECOMMENDED WHEN DIFFUSER DEFLECTORS LEAVE LIMITED SPACE FOR ROD.



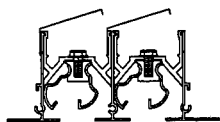
## CORD CONTROL DAMPER

- SAME AS STANDARD EXCEPT WITH NYLON PULL CORDS FOR CONTROL.
- IDEAL WHEN DEFLECTORS LIMIT ACCESS WITH RIGID ROD OR WIRE TOOL.



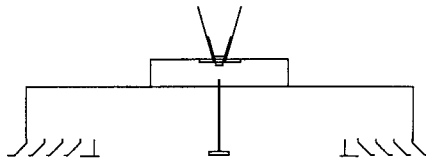
## LEVER CONTROL DAMPER

- SINGLE BLADE
- ADJUSTS WITH LEVER CONTROL ON OUTSIDE OF INLET COLLAR.
- WINGNUT ALLOWS FOR LOCKING DAMPER IN POSITION



## HPL DAMPER

- HINGE TYPE BLADE



## BUTTERFLY DAMPER

- TWO BLADE DAMPER
- T-HANDLE TOOL SHIPPED LOOSE.
- USED PRIMARILY ON 24X24 PRODUCTS SUCH AS ACD, P-360, PRO-24, ETC.

JOB NAME: \_\_\_\_\_

LOCATION: \_\_\_\_\_

ARCHITECT: \_\_\_\_\_

ENGINEER: \_\_\_\_\_

CONTRACTOR: \_\_\_\_\_

## INLET DAMPER OPTIONS

DRAWN BY  
RBJ

DATE  
1-10-00

DWG. NO.  
DAMP

P.O. BOX 250  
ALBION, IOWA 50005  
PH. (641) 488-2211 FAX (641) 488-2796  
www.raymon-hvac.com



**RAYMON**  
DONCO AIR DISTRIBUTION EQUIPMENT